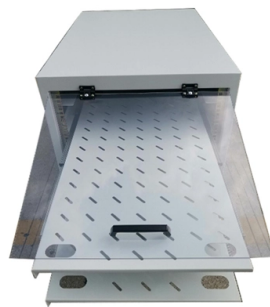


Can a 100Mbps optical-to-electrical converter module negotiate with a 10 Gigabit Ethernet connection



Overview

The 10/100/1000M media converters are designed to transmit and receive data over optical fiber. Also, apparently, the Nexuses (Nexi?)

) won't negotiate down to 100mb on gigabit SFPs. I tried looking this morning but I'm having trouble finding anything supported. Any suggestions for 100mb native SFPs for copper, not fiber?

I can just put in another switch in between to handle it, which is what I. 100BASE FX SFP remains a widely used solution for deploying 100Mbps fiber connectivity in industrial, enterprise, and legacy Fast Ethernet networks. The optical interface operates at a 100Mbps Ethernet rate. LED indicators are provided for rapidly. I have a USB to Ethernet converter which has 10/100 PHY and I want to connect that PHY to the gigabit Ethernet PHY.



Article Content

Jul 04, 2025

100BASE FX SFP: Complete Guide to 100Mbps Fiber Transceivers

100BASE FX SFP remains a widely used solution for deploying 100Mbps fiber connectivity in industrial, enterprise, and legacy Fast Ethernet networks. While Gigabit and higher-speed optics dominate

Nov 18, 2025

AP negotiating 100Mb instead of 1Gbps

Hi All, Cisco AIR-AP3802I-B-K9 is connected to cisco WS-C4506-E on module WS-X4648-RJ45V+E . WLC is having version as 8.2.166.0 Now the

Jan 26, 2026

TL-MC102 | Gigabit Multi-Mode Media Converter | TP-Link

TL-MC102 supports shortwave (SX) laser specification at a full wire speed forwarding rate. It works at 850nm on both transmitting and receiving data. Other features of

Aug 19, 2025

AP negotiating 100Mb instead of 1Gbps

4 Virtual Ethernet interfaces 148 Gigabit Ethernet interfaces 2 Ten Gigabit Ethernet interfaces 511K bytes of non-volatile configuration memory.

Oct 25, 2025

Configure and Verify Ethernet 10/100/1000Mb Half/Full Duplex ...

This document describes the guidelines to troubleshoot, as well as isolate and resolve, Ethernet auto-negotiation issues.

Oct 28, 2025

10 100 1000 Base T Explained: A Guide to Gigabit Ethernet

Devices labeled with this specification can automatically negotiate the highest compatible speed between connected endpoints, enabling backward compatibility across multiple generations of

Feb 06, 2026

Comnet CNFE1003M2 | 10/100Mbps Ethernet Electrical

Comnet CNFE1003M2 | 10/100Mbps Ethernet Electrical to Optical Media Converter, Standard, DC, 1310nm, SC Connector, 2 Fibers, Multimode The ComNet

Jul 11, 2025

A Comprehensive Guide to 100G Optical

Modern data centers rely on high-speed optical links, and 100G optical transceiver modules (especially the QSFP28 form factor) are now foundational for this

Jun 28, 2025

10/100/1000M Media Converter Manufacturer

The 10/100/1000M media converters are designed to transmit and receive data over optical fiber. The electrical interface will Auto-Negotiate to a 10Mbps, or 100Mbps or 1000M Ethernet rate without any

Oct 01, 2025

Gigabit Ethernet Interfaces | Junos OS | Juniper Networks

Learn about speed and autonegotiation on Gigabit Ethernet interfaces, and how to configure speed and autonegotiation.

Dec 12, 2025

10/100Mbps Ethernet Electrical to Optical Media Converter with

ical fiber using sold-separately SFP* modules to select distance and connector type. The electrical interface will Auto-Negotiate to a 10 Mbps, or 100 Mbps Ethernet rate

Jun 21, 2026

Using an Ethernet gigabit PHY for only 100 and 10 Mbps

Second, there's no issue with connecting 10/100 to Gbit pairs A and B - the Gbit PHY will negotiate that. As a sanity check, try it out by lashing up a

Feb 28, 2026

100mb native SFP for Nexus 7700? Not gigabit that will auto-negotiate.

My past experience has been that they'll negotiate down just fine (in fact, auto-negotiation is a requirement of the gigabit ethernet standard), but apparently negotiation below gigabit speeds just

Oct 05, 2025

SFP GLC-SX-MM module speed issues

Hi, I'm having difficulties in connecting such SFP module to a PTT device - at& t canoga perkins 9145 - at 100Mbps speed. Found documentation that such fiber module does not support

Jul 12, 2025

Is SFP Compatible With SFP+? Can 10G SFP+ Run at 1G SFP Port?

Typical speeds were 1 Gbit/s for Ethernet SFPs and up to 4 Gbit/s for Fiber Channel SFP modules. SFP port (electrical port and optical port) enables a gigabit switch to achieve fiber uplink

Aug 13, 2025

10/100 Mbps Ethernet Electrical To Optical Media Converter

The ComNet™ Ethernet CNFE100X media converter series are one-channel Ethernet electrical to optical media converters. These auto-negotiating devices accept a 10/100 Mbps electrical input and

Jul 20, 2025

TP-Link MC220L | Gigabit SFP to RJ45 Fiber Media

About this item □Convert Fiber to Ethernet□Designed to convert 1000BASE-SX/LX fiber to 1000Base-T copper media or vice versa. □Versatile Compatibility

Nov 26, 2025

Ethernet-to-Fiber Media Converters

Moxa's Ethernet to Fiber media converters feature innovative remote management, industrial-grade reliability, and a flexible, modular design that can fit any type of

May 14, 2026

Media Converters | Active Equipment | Cable Monkey

This CCS Fast Ethernet 100Base-TX to Fiber 100 Base-FX converter features one fiber port with SC connector. It converts electrical signal from 100Base-TX side

Feb 10, 2026

100BASE FX SFP: Complete Guide to 100Mbps Fiber Transceivers

Gigabit SFP ports generally do not support 100Mbps modules unless explicitly dual-rate. Upgrading to 1Gbps may require replacing both modules and switching hardware.

Jun 18, 2026

10/100 Mbps Ethernet Electrical To Optical Media Converter

The ComNet™ Ethernet media converters are designed to transmit and receive 10/100 Mbps data over multimode or single mode optical fiber. The electrical interface will Auto-Negotiate to a 10 Mbps, or

Sep 25, 2025

Perle S-1110 Installation Guide-19

Overview This document contains instructions necessary for the installation and operation of the Perle Standalone 10/100/1000 rate converting Media Converters (S-1110). These products convert a

Jun 11, 2026

MC220L | Omada Gigabit SFP Media Converter

What This Product Does The MC220L is a media converter designed to convert between 1000BASE-SX/LX fiber and 10/100/1000Base-T copper media. It easily

May 30, 2026

Choosing a Fast Ethernet Media Converter

With connections for 100BASE-TX and 100BASE-FX this media converter is intended exclusively for the Fast Ethernet environment. It converts twisted pair to optical fiber and can be used to extend a Fast

May 05, 2026

Understanding SFP to SFP+ Compatibility: A

If you have a 1G switch and a 10G switch, using 10G modules will result in a 1G network connection. Therefore, it's usually more cost-effective to use 1G

Sep 26, 2025

10/100/1000Base-T RJ45 to 1000Base-FX SFP Fiber

10/100/1000Base-T RJ45 (100m/328ft) Gigabit Ethernet to 1000Base-FX Open SFP Fiber Media Converter (Distance depending on SFP module) Manufacturer,

Jul 20, 2025

OFC Media Converter

OFC Media Converter Our media converters provide an easy and economical solution to upgrade a copper based network to fiber optic to extend the signal

Feb 03, 2026

Can 10G SFP run at 1G?

No, a 10G SFP (small form-factor pluggable) module cannot run at 1G. The SFP module operates at a specific speed and cannot be downgraded to run at a slower speed. If a 1G connection

Mar 18, 2026

SFP-1G-SX Explained: The Essential Guide to 1G

The SFP-1G-SX module is a proven, reliable, and cost-effective solution for 1 Gigabit short-range fiber optic connectivity. Understanding its

Contact Us

For more information, pricing, or custom solutions, please contact us:

Website: <https://www.moletenare-ew.co.za>

Email: info@moletenare-ew.co.za

Phone: +86 138 1658 3346

Address: Ningbo, China

This document is for informational purposes only. Specifications subject to change without notice.

