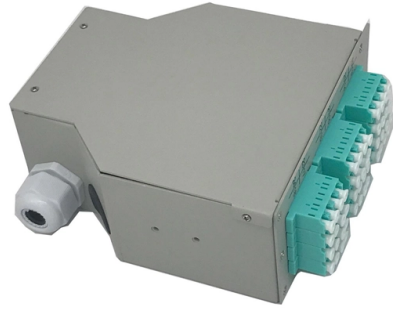


# Installation height of the cable tray support



## Overview

Elevations must be determined for either the top or bottom of the tray run. RS cable trays with an edge height of 60 mm are used in widths of 100 to 300 mm. The couplers are made with two internal RVV 60 lug connectors and a RSLB base coupler. TKS pendant brackets up to a length of 900 mm and TKS 150 to TKS 350 brackets or TKS 100 to TKS 300 brackets with KAWG 12 bracket. This publication is intended as a practical guide for the proper and safe\* installation of cable ladder systems, cable tray systems, channel support systems and associated supports. Cable ladder systems and cable tray systems shall be manufactured in accordance with BS EN 61537, channel support. A cable support system consists of cable support lengths and system components, such as cable support fittings, support elements, mounting elements and system accessories. Here's what you need to know: Cable Types: Only use.



## Article Content

Nov 21, 2025

Technical Specification for Cable tray installation and cable laying work

1. Scope :- This specification covers the following major activities; - Fabrication and installation of Mild Steel (MS) support structure for Galvanized Iron (GI) Cable tray. - Installation of perforated GI Cable

Dec 10, 2025

Cable Tray Technical Guide A practical guide to product selection and ...

Cable tray length is selected based on the load to be supported, the distance between the supports (also referred to as the span), and handling and installation constraints.

May 19, 2026

CABLE TRAY SYSTEMS GUIDE

Steel Ladder System Hubbell's NEXTFRAME® Ladder Tray is the effective and widely used cable runway that supports and delivers bundles of cable between cabinets, racks, and closets, along

Sep 18, 2025

Guide to cable support systems

Universal systems for cable support structures are used for small loads. The systems are suspended from the ceiling with threaded rods, stand-off brackets allow raised floor mounting of cable trays,

Feb 09, 2026

A Guide to Installing and Supporting Electrical Cable Trays

This guide covers the critical steps, from selecting the right electrical cable tray and performing accurate cable fill calculations to managing a safe cable pull through

Sep 06, 2025

Cable Tray Systems: Requirements and Best Practices

Comprehensive guide to cable tray systems requirements: tray types, materials, loading, supports, bonding, routing, and best practices for safe electrical cable management.

Apr 08, 2026

CABLE TRAY SYSTEMS GUIDE

Some applications may require the cable tray to support the weight of a single, dead object in addition to the cable loads. Specifications typically require this to be applied at the midpoint of the span between

Jun 03, 2026

### Best Practice Guide to Cable Ladder and Cable Tray Systems

This guide covers cable ladder systems, cable tray systems, channel support systems and associated supports intended for the support and accommodation of cables and possibly other electrical

Sep 12, 2025

### GENERAL INFORMATION

In vertical installations, the weight of the suspended cable creates a tensile load on itself and is the factor, from a cable perspective, that limits the height of vertical installation for a tight buffer cable.

May 14, 2026

### Cable Tray Dimensions and Specifications as per NEC

Many electrical systems employ cable trays. They route cables safely & efficiently. NEC defines minimum cable tray size & electrical installation

May 24, 2026

### Method Statement installation of Cable Trays and Ladders

This method statement covers the site installation of the cable tray & ladders and the requirements of checks to be carried out.

Jan 11, 2026

### Cable Tray Technical Guide A practical guide to product selection and ...

A practical guide to product selection and installation This guide for engineers and installers has been developed by ABB as a practical reference regarding cable tray characteristics, installation, and

Mar 07, 2026

### INSTALLATION GUIDE

Center hung tray supports allow for quicker and easier cable installation by allowing cables to be deposited into tray systems from each side. There is a maximum load capacity per hanger of 318 kg

Feb 10, 2026

### Cable Tray Spacing Standards for Installation and Safety

Proper installation can significantly reduce electromagnetic interference, prevent fire hazards, and improve overall efficiency. This article

Nov 26, 2025

### Rooftop Cable Tray Support System

PHP's cable tray support system is engineered to sustain various sizes of cable runs on your rooftop. PHP is the leader in cable tray support systems.

Feb 24, 2026

### How to install Cable Trays – Best Guide in 2026

In this post, we will see together how to install cable tray on-site. Firstly, we need an approved shop drawing that shows the cable tray route, its dimensions,

Dec 10, 2025

### Best Practice Guide to Cable Ladder and Cable Tray Systems

Cable ladders and cable trays should be mounted far enough off the floor or roof to allow the cables to exit through the bottom of the cable ladder or cable tray.

Dec 19, 2025

### Beama Best Practice Guide | Installation Of The System | Cable ...

2.2 Structural characteristics When considering the installation of the cable supports system it is imperative to avoid the cutting or drilling of structural building members without the approval of the

Nov 05, 2025

### Best practice guide to cable ladder and cable tray

Cable ladder and cable tray systems The following recommendations are intended to be a practical guide to ensure the safe and proper installation of

May 15, 2026

### Best Practice Guide to Cable Ladder and Cable Tray Systems

Introduction This publication is intended as a practical guide for the proper and safe\* installation of cable ladder systems, cable tray systems, channel support systems and associated supports. Cable ladder

Jun 21, 2026

### B-Line series Cable Tray Design Considerations

As an industry leader in cable tray, Eaton offers one of the widest ranges of cable management solutions available in the market today with its B-Line series portfolio. With unmatched quality and service, we

Jan 23, 2026

#### CABLE TRAYS GENERAL INFORMATION AND

Using cable trays as walkways can cause personal injury and also damage cable tray and installed cables. Performances of cable tray systems are dependent on

Dec 13, 2025

#### Cable Tray Installation Rules (NEC 392) - Electrical Trader

Generally, standard trays require supports every 6 to 10 feet, while heavy-duty, long-span trays can handle distances of up to 20 feet between supports. To determine the proper spacing,

Mar 01, 2026

#### Guide to cable support systems

When installing cable support systems, for example on the UniBase universal stand, make sure that the support surface corresponds to the full width of the installed system.

Dec 22, 2025

#### Safely Installing, Maintaining and Inspecting Cable Trays

Cable trays support cables across open spans in the same way that roadway bridges support traffic. Cable trays can provide a safe component of a power, low voltage control, data or

## Contact Us

For more information, pricing, or custom solutions, please contact us:

Website: <https://www.moletenare-ew.co.za>

Email: [info@moletenare-ew.co.za](mailto:info@moletenare-ew.co.za)

Phone: +86 138 1658 3346

Address: Ningbo, China

This document is for informational purposes only. Specifications subject to change without notice.

