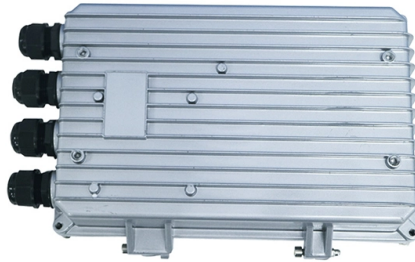


# Why is the distance of the KVM switch not high



## Overview

KVM switches typically have a limited range, and the distance between the switch and the computers can affect the quality of the video signal. If the distance is too great, the video signal may degrade, resulting in a poor quality image. or, and mouse (KVM station) and a computer. Since PS/2 and USB keyboard and mouse protocols are only designed to run at a distance of about 16-33 feet, and digital video signal quality is typically starting to deteriorate beyond about the same cable length (depending on the type of cable and. A KVM switch is a device that manages multiple video and peripheral signals, enabling access via a single screen, keyboard, and mouse—or, in reverse, through a reverse KVM switch. This technology allows operators to efficiently control multiple data or AV sources and is compatible with any. A KVM switch (with KVM being an abbreviation for "keyboard, video, and mouse") is a hardware device that allows a user to control multiple computers from one or more sets of keyboards, video monitors, and mouse. Typically, it is a set of transmitter and receiver appliances. Some KVM manufacturers such as Raritan and StarTech.



## Article Content

Nov 06, 2025

### Complete Guide To KVM Switching & Extension

What is KVM extension and KVM switching? KVM extension technology offers point-to-point extension of computer signals over a certain physical distance. Like this, it enables users to remotely access a

Jan 28, 2026

### KVM Selection Guide

If you have a few computers in close proximity, then a Desktop Switch may be right for you. If you are a government or military worker who needs access to systems at different classification levels, then a

May 08, 2026

### Unlocking the Secrets of KVM Switches: Understanding Their Limitations

KVM switches typically have a limited range, and the distance between the switch and the computers can affect the quality of the video signal. If the distance is too great, the video signal may

Jan 25, 2026

### KVM Extenders | Frequently Asked Questions | Matrox Video

KVM extenders overcome the distance limitation of HDMI®, DisplayPort™, and USB cables and transport these signals anywhere from 15 feet to several miles away from the system.

Jan 14, 2026

### Top 6 Considerations When Choosing a KVM Switch

And some KVM over IP solutions allow users to access a server from unlimited distances. KVM sources can also be extended using KVM extenders.

Feb 18, 2026

### KVM Extenders | Frequently Asked Questions | Matrox Video

Learn about KVM extenders; how they work, where they are used, their benefits, the maximum distance that signals can be extended, and more.

Nov 26, 2025

### No More Distance Between KVM Switch, PC

The major problem with traditional KVM switches is that they need special connection cables that are only available in limited lengths.

Dec 20, 2025

### Top 6 Considerations When Choosing a KVM Switch

The maximum distance with a Cat5 KVM extender varies; some high-end analog Cat5 extenders allow users to be up to 1,000 feet away from the

Feb 10, 2026

### 8 Benefits of Using a KVM over IP Switch in Your Server

Discover the 8 benefits of implementing a KVM over IP switch in your server room, like remote access, network flexibility, real-time access, etc. Find

Jul 31, 2025

### What Are the Hidden Costs If You Choose a Wrong

EDID Emulator Are you using a KVM switch that connects your displays via HDMI? If not, for example, the connector is DisplayPort or VGA, it's

Feb 18, 2026

### Top 6 Considerations When Choosing a KVM Switch

KVM sources can also be extended using KVM extenders. The maximum distance with a Cat5 KVM extender varies; some high-end analog Cat5

Sep 04, 2025

### What is a KVM Switch and How does it Work? (Explain)

Do KVM switches still exist today? A desktop display integrated with a keyboard, video, and mouse switch is an excellent solution if your work and

Feb 20, 2026

### Remote KVM: What It Is and Why It Matters?

Remote KVM takes this concept further by eliminating the need for physical proximity. Instead of relying on cables to switch between devices,

Nov 06, 2025

### Selecting the Best KVM Extender: A Concise Guide

Here's some quick advice to find the best kvm switch. Check how factors like KVM signal management, signal types, resolution, USB device

Mar 23, 2026

## Complete Guide To KVM Switching & Extension

KVM over IP extenders are preferred for applications where connectivity needs to be established across vast distances, where scalability of the system is crucial (KVM switching), or it is preferable to extend

Jun 01, 2026

## How to Set Up a KVM Switch Step by Step

This is a short guide to help you set up a KVM switch step by step and more resources are given for further reading.

Mar 01, 2026

## Unlocking the Secrets of KVM Switches: Understanding Their Limitations

Some KVM switches can be used with high-resolution video, but it depends on the specific switch and the type of video connection used. Some KVM switches may have HDMI or DisplayPort

May 21, 2026

## What is a KVM Switch Used for and How Does it Work?

The origins of KVM switch technology can be traced back to the early 1990s and the rise of data centers. System administrators realized quickly it

Nov 16, 2025

## Selecting the Best KVM Extender: A Concise Guide

KVM extenders eliminate the distance limitations of HDMI®, DisplayPort™, and USB cables, enabling signal transmission from as little as 15

Oct 19, 2025

## Understanding KVM Switches

KVM matrix switches are often used alongside KVM extenders to connect machines and users over varying distances, ranging from less than 150 meters with CATx to over 20 kilometers

May 18, 2026

## KVM Switch Explained: One Switch, Several Computers

Wondering what a KVM switch is and why you might need one? Check out this article, as it provides all the essential details you need to know

Jan 07, 2026

KVM switch

OverviewPassive and active (electronic) switchesNameTypesUseVideo bandwidthMonitorSoftware alternatives

KVM switches were originally passive, mechanical devices based on multi-pole switches and some of the cheapest devices on the market still use this technology. Mechanical switches usually have a rotary knob to select between computers. KVMs typically allow sharing of two or four computers, with a practical limit of about twelve machines imposed by limitations on available switch configurations. Modern hardware

Jan 01, 2026

KVM Switches and Extenders FAQ

How far away from the switch can the Computers/User (s) be? Depending on the model you purchase the CPUs and Users can be up to 300mtrs away over UTP CatX cable or up to 10,000 meters over

Mar 13, 2026

Why Isn't My KVM Switch Working? Let's Troubleshoot!

If the KVM switch you are using does not have this standalone hub, you may try using an added USB hub to extend one.

Sep 18, 2025

KVM Quick Troubleshooting Guide

I've noticed lately I've been recommending similar troubleshooting steps for KVMs before going into more technical concerns. We have the KVM

Dec 23, 2025

What Is a KVM Switch?

When you switch, the KVM switch replaces the emulated signal with your actual peripheral's signal, providing a smooth and unnoticeable transition.

## Contact Us

For more information, pricing, or custom solutions, please contact us:

Website: <https://www.moletenare-ew.co.za>

Email: [info@moletenare-ew.co.za](mailto:info@moletenare-ew.co.za)

Phone: +86 138 1658 3346

Address: Ningbo, China

This document is for informational purposes only. Specifications subject to change without notice.

